

Hands Free, Error Free, Stress Free
Amazing Evolution of the Auto-Blocker



EXPERT & EXPRESS

KAIZER X
with Full Intelligent System

Accurate Lens Recognition, Convenient Blocking

Place the lens on the plate, and HAB-910 will do the rest

Professional Optical Company Huvitz presents HAB-910 which is equipped with a Full-Automation system.

Remarkable high speed, reliable accuracy and a user-friendly interface.

HAB-910 maximizes all performances to meet the expert's needs and is elevated to a new level of Auto-blocker.



Auto Lens Gripping



Intelligent Lens Recognition



Auto Block Adaptor Loading



Auto Blocking



1 stop

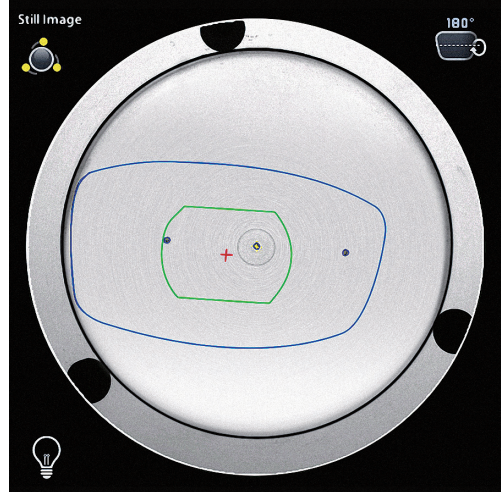
The lens gripping and the block adaptor loading with minimal operator effort

Auto Lens Gripping

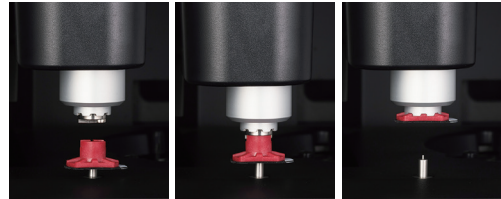
Automated lens gripping function is more accurate, without any lens slippage

Auto Block Adaptor Loading

Auto Block Adaptor Loading with magnetic forces enable lens blocking, regardless of the direction it is placed, with just the push of a button.



Auto Lens Gripping



Auto Block Adaptor Loading

1st

Remarkable Huvitz world-wide optical tech

HDT™ (Huvitz Dual Technology)

The combination of Hartmann lensmeter and Retro-Reflection structure enables precise lens recognition and faster and more accurate lensmeter measurement.

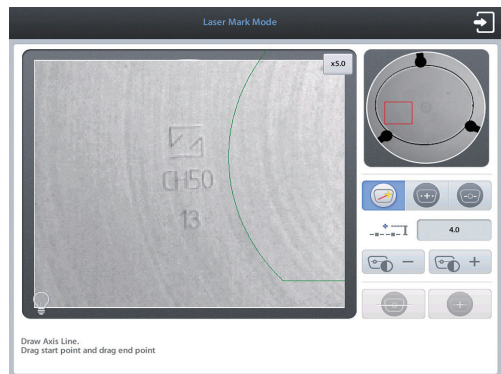
No more prism distortion, better laser mark distinction & better demo lens scan performance by minimizing influence of external light

Fixed position of Hartmann Lensmeter

Find optical center and cylinder axis faster and precisely with a fixed position Hartmann lensmeter and a new optical algorithm complementing optical loss.



Lensmeter Measurement / Lens Recognition & Scanning Demo Lens



Laser Mark Zoom-In Mode

4x

4 times faster speed & increased performance

The fastest measurement speed among all Auto-blockers

Lensmeter measurement, scan & cut and digital scan speed have been improved up to 4 times or more.

HAB-910 is the fastest auto blocker with improvements in both speed and performance.



Scan & Cut for Step bevel Job



KAIZER X with Full Intelligent System

Specifications

Tracing Type	Automatic 3D Binocular Tracing
Tracing Mode	Auto, Semi-Auto (Manual tip-positioning)
Tracing Size	Frame ϕ 16.0 ~ 92.0 mm, Pattern ϕ 16.0 ~ 84.0 mm
Frame Material	Metal, Hard Plastic, Soft Plastic, Ultem
Frame Data Processing	FPD, Frame Curve, Circumference, 3D Angle, Concave Shape (Demo lens)
Measurement	- 25 D ~ + 25 D
Sph and Cyl Measurement	- 6 D ~ +6 D (Cylinder included, min. Step 0.01 D)
Blocking Tolerance	- 0.5 ~ + 0.5 mm, Axis \pm 1°
Blocking Method	Automatic loading block adaptor with magnet Automatic blocking with mechanical arm
Blocking Pressure	2.0 kgf
Lens Recognition Mode	Intelligent, Auto, Manual, Semi-Auto (for laser mark)
Lens Type Recognition	Single, Bi-focal, Progressive, 3-Dot
Digital Scan	Shape, Hole/Slot/Notch, Step bevel line
Blocking Assistance	Gripper, Block adaptor loading check, Block attachment check, Camera zoom, Lens shortage check, PD/OH live adjustment, Auto brightness control
Layout Factors	FPD/DBL, PD (Binocular, Monocular), Cyl Axis, OH (Δ Y, Mixed Height, Box Height), Centering Method (Box Center, Optical Center)
Edging Factors	Lens material (Refer to the edger) Edging type (Refer to the edger) Edging position (Refer to the edger) Edging option : Polishing, Safety beveling, Safety mode
Functions	Job manager, Digital pattern, Hole editor, Asymmetric bevel editor, Scan & Cut shape editor, Step bevel editor, Image/CAD file converter, OMA import/export, CAD file export, Auto job save & transmission, R/L shape correction, DCS/OMA compatibility
Utilities	Tiltable LCD screen USB Memory Barcode reader interface
Display	9.7 inch Color TFT LCD (1024 x 768) with touch screen
Dimensions / Weight	306 (W) x 530 (D) x 511 (H) mm / 23.6 kg
Power Supply	AC 100 - 240 V, 50/60 Hz
Power Consumption	75 W

Specification and design are subject to change without notice.



HUVITZ Co., Ltd. 38, Burim-ro 170beon-gil, Dongan-gu,
Anyang-si, Gyeonggi-do, 14055, Republic of Korea
Tel : +82-31-442-8868 Fax : +82-31-477-8617 <http://www.huvitz.com>

L4XXCL-21-00001-210916